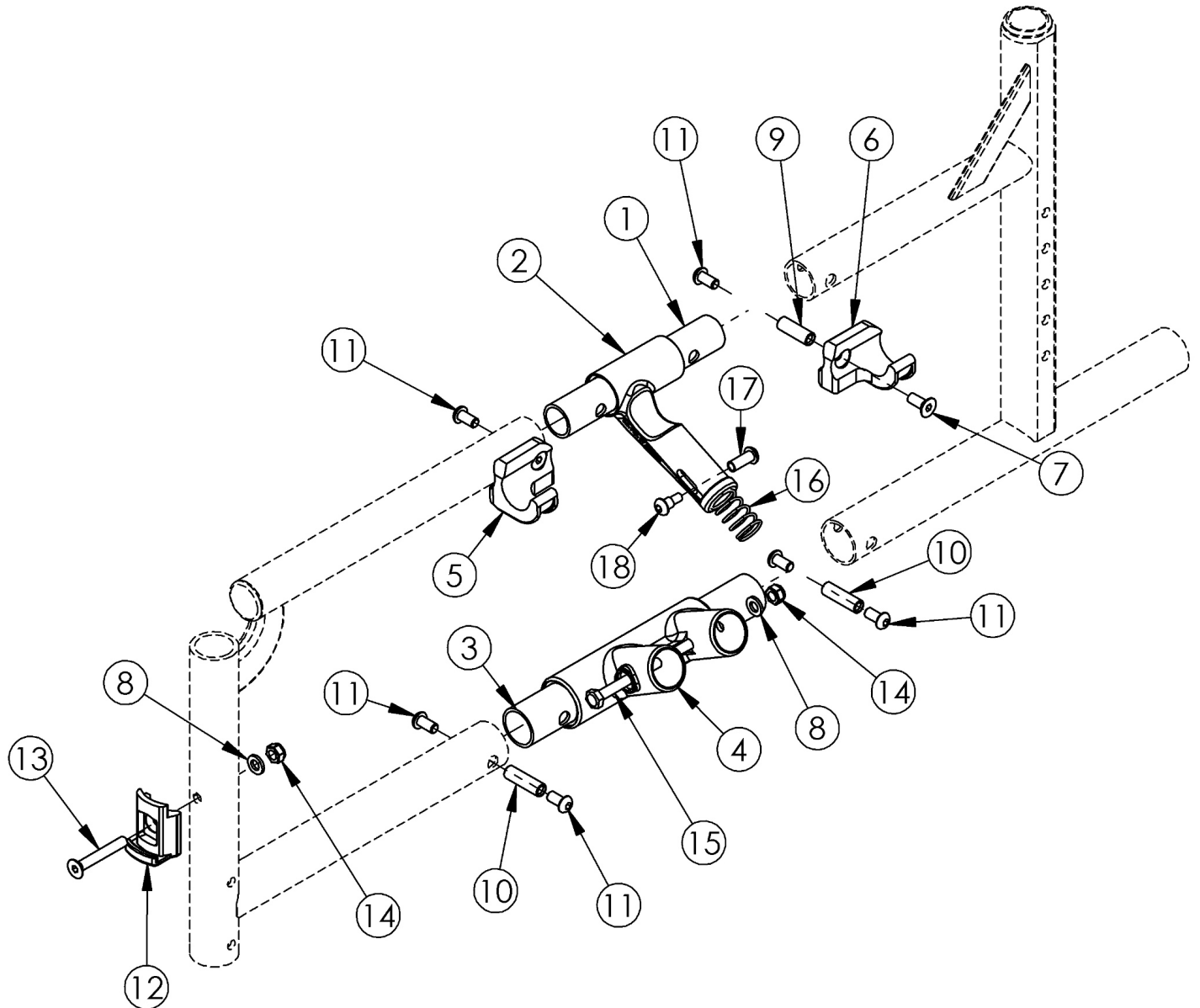


Catalyst 4 Side Frame Assembly - Open Seating (Seating System)



Upper Pivot Assemblies are based on seat width

Item Number	Part Number	Description	Quantity
2b, 16-18	500024	Upper Pivot Assembly 14" Width <i>This kit also contains the 14" slider link (not pictured)</i>	1
2a, 16-18	500025	Upper Pivot Assembly 15" Width <i>This kit also contains the 15" slider link (not pictured)</i>	1
2a, 16-18	500026	Upper Pivot Assembly 16" Width	1

Item Number	Part Number	Description	Quantity
		<i>This kit also contains the 16" slider link (not pictured)</i>	
2a, 16-18	500027	Upper Pivot Assembly 17" Width <i>This kit also contains the 17" slider link (not pictured)</i>	1
2a, 16-18	500028	Upper Pivot Assembly 18" Width <i>This kit also contains the 18" slider link (not pictured)</i>	1
2a, 16-18	500029	Upper Pivot Assembly 19" Width <i>This kit also contains the 19" slider link (not pictured)</i>	1
2a, 16-18	500030	Upper Pivot Assembly 20" Width <i>This kit also contains the 20" slider link (not pictured)</i>	1
2a, 16-18	501479	Upper Pivot Assembly 21/22" Width <i>This kit also contains the 21/22" slider link (not pictured)</i>	1
1	000011	Frame Connector Upper CAT	1
3	000009	Frame Connector Lower CAT	1
4a	000001	Lower Frame Pivot CAT <i>Used with round style cross braces which are used on 14" - 20" wide chairs with Standard Weight Capacity</i>	1
4b	002806	Lower Frame Pivot CAT <i>Used with oval style cross braces which are used on 21" - 22" wide chairs or chairs with Heavy Duty Option (effective 6/15/16)</i>	1
5	000960R	Seat Hook Open Frame Right Front Frame / Left Rear Frame, Catalyst	1
6	000960L	Seat Hook Open Frame Left Front Frame / Right Rear Frame, Catalyst	1
7	101594	M6 x 14 CLS10.9 DIN7991 FSHCS BLKZC w/Patch	2
8	100746	M6 Flat Washer Blk Zn	2
9	000065	M6 x 23.68 Threaded Barrel	2
10	000066	M6 x 27 Threaded Barrel	2
11	100667	M6 x 12 BTN SHCS BLKZC w/Patch	6
12	000336	Latch Block	1
13	101819	M6 x 40 FHCS Blk Zn	1
14	100658	M6 Nylock Nut Blk Zn	2
15	100704	M6 x 90 CLS8.8 DIN931 HHCS ZC	1