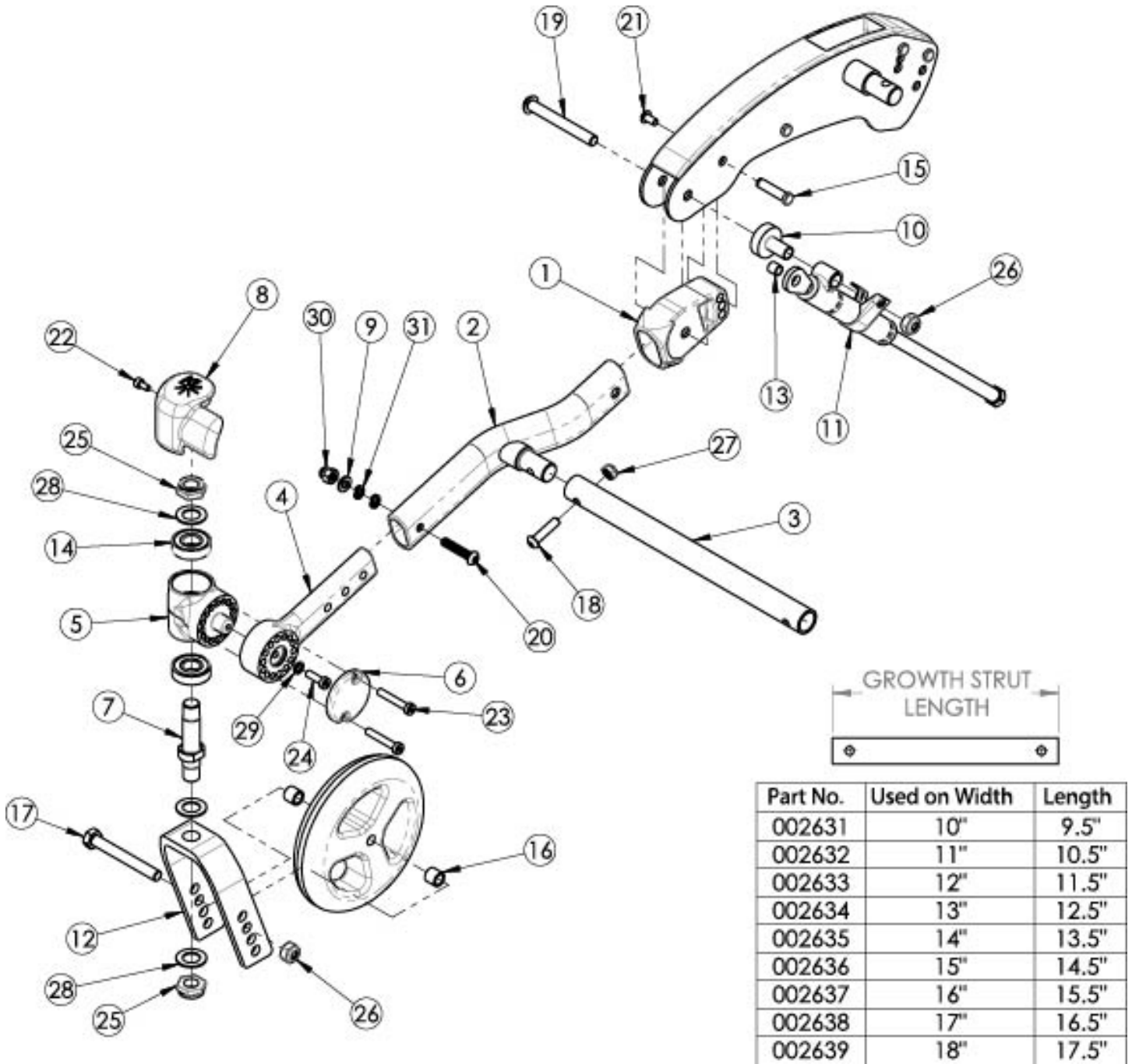


(Discontinued) Flip Caster Arm



Discontinued 5/1/2024

| Item Number | Part Number | Description | Quantity |
|----------------|-------------|----------------------------|----------|
| 7, 12a, 25, 28 | 502802 | Fork Assembly 5" FLIP | 1 |
| 7, 12b, 25, 28 | 502803 | Fork Assembly 6" FLIP | 1 |
| 7, 12c, 25, 28 | 502804 | Fork Assembly 6" Wide FLIP | 1 |

| Item Number | Part Number | Description | Quantity |
|--------------------------|-------------|--|----------|
| 7, 12d, 25, 28 | 502805 | Fork Assembly 7" FLIP | 1 |
| 7, 12e, 25, 28 | 502806 | Fork Assembly 7" Wide FLIP | 1 |
| 10, 11a, 13, 19, 26 | 503213 | Mechlock Replacement Kit, 45° Right <i>Used with Standard Axle Plate</i> | 1 |
| 10, 11b, 13, 19, 26 | 503214 | Mechlock Replacement Kit, 45° Left <i>Used with Standard Axle Plate</i> | 1 |
| 10, 11a, 11b, 13, 19, 26 | 502797 | Mechlock Replacement Kit, 45° PAIR FLIP <i>Used with Standard Axle Plate</i> | 1 |
| 10, 11c, 13, 19, 26 | 503215 | Mechlock Replacement Kit, 35° Right <i>Used with Self Propel Axle Plate</i> | 1 |
| 10, 11d, 13, 19, 26 | 503216 | Mechlock Replacement Kit, 35° Left <i>Used with Self Propel Axle Plate</i> | 1 |
| 10, 11c, 11d, 13, 19, 26 | 502798 | Mechlock Replacement Kit, 35° PAIR FLIP <i>Used with Self Propel Axle Plate</i> | 1 |
| 16a, 17a, 26 | 502653 | Caster Attachment Hardware Kit CAT/FCS | 1 |
| 16b, 17b, 26 | 502654 | Caster Attachment Hardware Kit for 6" and 7" Wide Fork, CAT/FCS | 1 |
| 1, 2 | 115608_ _ _ | Front Frame Tube Weldment w/Adjuster, Flip, Left | 1 |
| 1, 2 | 115609_ _ _ | Front Frame Tube Weldment w/Adjuster, Flip, Right | 1 |
| 3a | 002631 | Frame Growth Strut 9.5" | 1 |
| 3b | 002632 | Frame Growth Strut 10.5" | 1 |
| 3c | 002633 | Frame Growth Strut 11.5" | 1 |
| 3d | 002634 | Frame Growth Strut 12.5" | 1 |
| 3e | 002635 | Frame Growth Strut 13.5" | 1 |
| 3f | 002636 | Frame Growth Strut 14.5" | 1 |
| 3g | 002637 | Frame Growth Strut 15.5" | 1 |
| 3h | 002638 | Frame Growth Strut 16.5" | 1 |
| 3i | 002639 | Frame Growth Strut 17.5" | 1 |
| 7 | 501208 | Caster Stem, Ped Tilt | 1 |
| 8a | 002651 | Wear Pad, Caster, Right | 1 |
| 8b | 002652 | Wear Pad, Caster, Left | 1 |

| Item Number | Part Number | Description | Quantity |
|-------------|-------------|---|----------|
| 9 | 100746 | M6 Flat Washer Blk Zn <i>For hardware used with the Transit Option, see Little Wave Flip Transit System Page</i> | 1 |
| 10 | 001865 | Spacer, Mechlock | 1 |
| 11a | 001861 | Mechlock, 158mm, Right <i>Used with Standard Axle Plate</i> | 1 |
| 11b | 001862 | Mechlock, 158mm, Left <i>Used with Standard Axle Plate</i> | 1 |
| 11c | 001863 | Mechlock, 129mm, Right <i>Used with Self Propel Axle Plate</i> | 1 |
| 11d | 001864 | Mechlock, 129mm, Left <i>Used with Self Propel Axle Plate</i> | 1 |
| 12a | 501209 | Caster Fork 5" Flip | 1 |
| 12b | 501210 | Caster Fork 6" Flip | 1 |
| 12c | 501211 | Caster Fork 6" Wide Flip | 1 |
| 12d | 501212 | Caster Fork 7" Flip | 1 |
| 12e | 501213 | Caster Fork 7" Wide Flip | 1 |
| 13 | 001156 | Pivot Bushing Tilt | 2 |
| 15 | 000987 | Threaded Fastener | 1 |
| 16a | 100792 | Caster Spacer D8 x D12 x 10mm / Close Mount Handrim Spacer <i>Used with all casters except 6x2 and 8x2</i> | 2 |
| 16b | 001246 | Caster Spacer Black 6 x 2 Poly .472ODX.319IDX.370LG <i>Only used with 6" x 2" casters</i> | 2 |
| 17a | 101829 | M8 x 65 HHCS Blk Zn | 1 |
| 17b | 101831 | M8 x 80 HHCS Blk Zn <i>Used with wide forks</i> | 1 |
| 18 | 101593 | M6 x 25 BTN SHCS BLKZC | 1 |
| 19 | 102797 | M8 x 65, BHCS, Blk Zn | 1 |
| 20 | 102625 | M6 X 30 BHCS BLK ZC <i>For hardware used with the Transit Option, see Little Wave Flip Transit System Page</i> | 1 |
| 21 | 100669 | M5 x 10 BTN SHCS BLKZC w/Patch | 1 |
| 22 | 102800 | M4 x 8mm SHCS Blk Zn | 1 |

| Item Number | Part Number | Description | Quantity |
|-------------|-------------|--|----------|
| 24 | 102801 | M5 x 16, Low SHCS, Blk Zn | 1 |
| 25 | 100529 | M12 x 1.25mm Lock Nut Black | 2 |
| 26 | 100659 | M8 Nylock Nut Blk Zn | 2 |
| 27 | 100658 | M6 Nylock Nut Blk Zn | 1 |
| 28 | 100682 | Washer 1/2" .518 x .875 x .047 F/W Black Zinc | 3 |
| 29 | 102614 | M5 Split Lock Washer BLK ZC | 1 |
| 30 | 100558 | M6 Nyl Ins Domed Cap L/N Zc <i>For hardware used with the Transit Option, see Little Wave Flip Transit System Page</i> | 1 |
| 31 | 102810 | M6 Lockwasher, Hi-Collar, ZC <i>For hardware used with the Transit Option, see Little Wave Flip Transit System Page</i> | 2 |