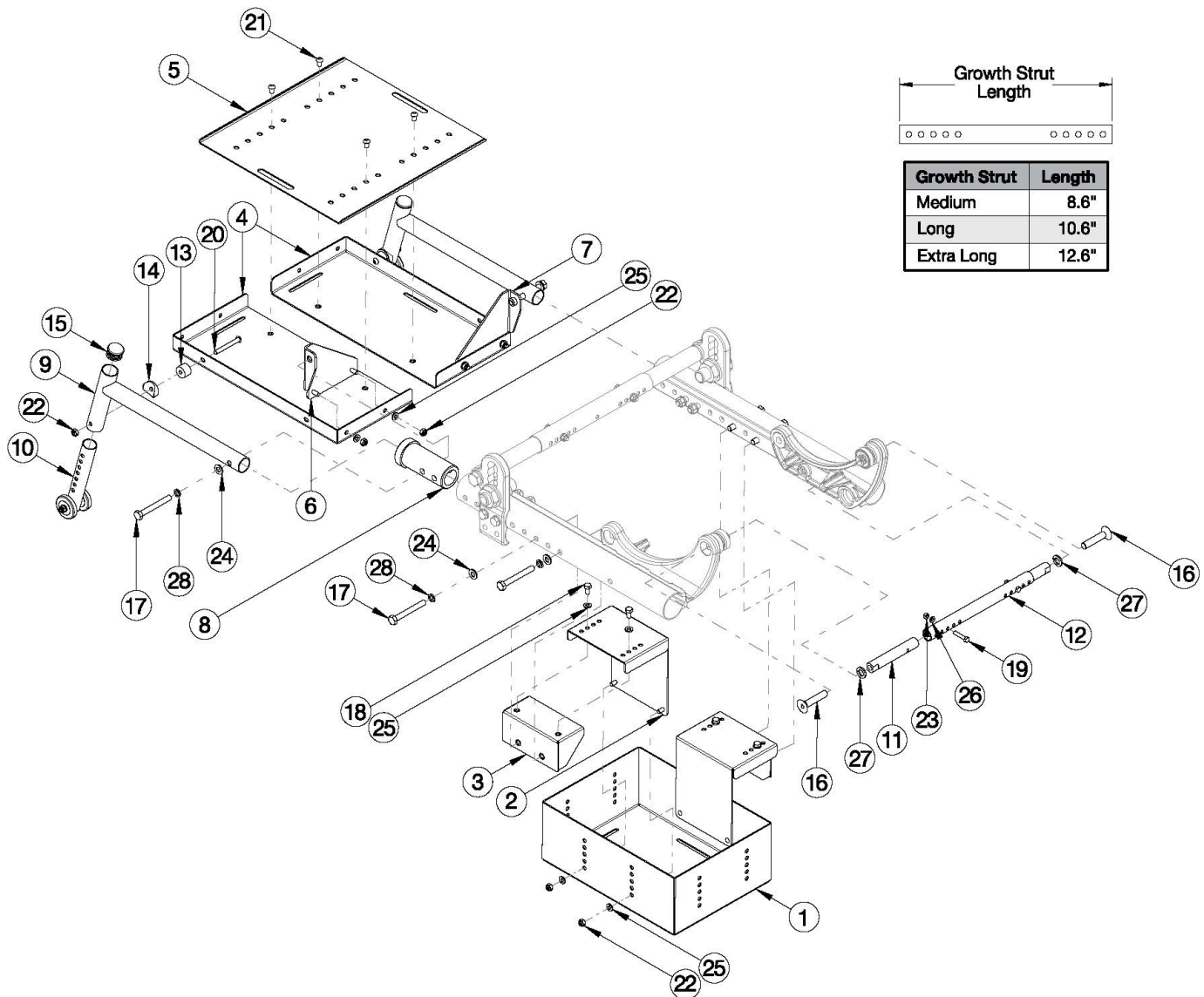


Focus CR Vent and Battery Tray



Vent and Battery Tray assemblies are based on Frame Width Range

Item Number	Part Number	Description	Quantity	Retail
8-10, 13-15, 17, 20, 22, 24	506840	Focus CR Vent Tray Anti-Tip <i>Includes parts for 1 side</i>	1	\$81.19
1, 2, 3a, 4 - 11, 12a, 13 - 28	501436	Vent and Battery Tray Assm Medium TILT	1	\$626.72
1, 2, 3a, 4 - 11, 12b, 13 - 28	501437	Vent and Battery Tray Assm Large TILT	1	\$629.10
1, 2, 3b, 4 - 11, 12c, 13 - 28	114277	Vent and Battery Tray Assm X-Large TILT	1	\$631.65
1 - 3a, 11, 12a, 17 - 19, 22 - 28	501438	Battery Tray Assm Medium TILT	1	\$304.85

Item Number	Part Number	Description	Quantity	Retail
1 - 3a, 11, 12b, 17 - 19, 22 - 28	501439	Battery Tray Assm Large TILT	1	\$307.20
1, 2, 3b, 11, 12c, 17 - 19, 22 - 28	114278	Battery Tray Assm X-Large TILT	1	\$309.75
4 - 10, 13 - 15, 17, 20 - 22, 24, 25, 28	501440	Vent Tray Assm TILT	1	\$323.06
1	001285	Battery Tray U1 TILT	1	\$97.59
2	001286	Battery Tray Hanger TILT	2	\$22.96
3a	001287	Battery Tray Mount, Frame, TILT <i>Used on 16"-22" wide</i>	2	\$25.33
3b	112006	Battery Tray Mount Extended Range, Frame, TILT <i>Used on 23"-24" wide</i>	2	\$25.33
4	001288	Vent Tray TILT	2	\$28.71
5	001289	Vent Tray Growth Plate TILT	1	\$34.44
6	001290	Vent Tray Hanger Right TILT	1	\$28.71
7	001291	Vent Tray Hanger Left TILT	1	\$28.71
8	001292	Vent Tray Mount Bushing TILT	2	\$28.71
9	001293	Vent Tray Support TILT	2	\$34.44
10	001170	Anti-Tip Lower Extension Assembly, Focus	2	\$9.77
11	001300	Strut End HD TILT	2	\$28.71
12a	001031	Growth Strut Rotary Medium TILT	1	\$27.15
12b	001032	Growth Strut Rotary Long TILT	1	\$29.49
12c	112004	Growth Strut Rotary X-Long TILT	1	\$32.05
13	102047	Spacer, .25ID x .75OD x .50LG	2	\$0.78
14	000055	Saddle 1"	2	\$1.66
15	100804	Tube End Plug 1"	2	\$1.66
16	101816	M10 x 50 FHCS Blk Zn	2	\$3.86
17	101829	M8 x 65 HHCS Blk Zn	6	\$3.31
18	101822	M6 x 12 HHCS BLKZC w/Patch	4	\$1.10
19	101821	M5 x 25 HHCS Blk Zn	2	\$1.10
20	101781	M6 x 50mm Partial Thread BHCS Blk ZC	2	\$1.66

Item Number	Part Number	Description	Quantity	Retail
21	101184	M6 x 10 BTN SHCS BLKZC w/Patch	4	\$1.66
22	100658	M6 Nylock Nut Blk Zn	10	\$1.10
23	100657	M5 Nylock Nut Blk Zn	2	\$0.56
24	101858	Washer Flat M8 Blk Zn	6	\$0.56
25	100746	M6 Flat Washer Blk Zn	12	\$1.66
26	101856	Flat Washer, M5, Blk Zn	2	\$0.56
27	102337	Lockwasher, M10, Blk Zn	2	\$0.56
28	101834	M8 Hi-Collar Lockwasher Blk Zn	6	\$0.56