



Q300M TRANSIT BRACKET



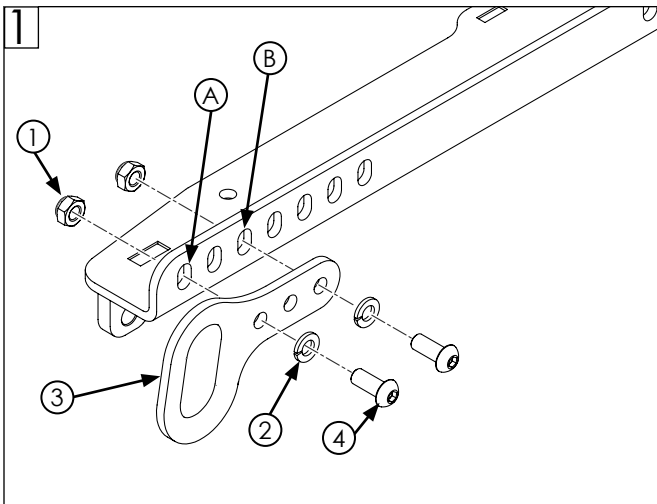
Please read these instructions carefully before beginning the assembly. Failure to understand and follow assembly instructions may result in injury to technician and/or end user and may void the warranty. If you have any questions call Sunrise Medical Technical Support at +1 (800) 333-4000.

Parts:

- | | |
|------------------------|---------------------------------|
| 1. NUT HEX NYLOCK (x4) | 3. FRONT TIE DOWN (x2) |
| 2. M8 LOCK WASHER (x4) | 4. BHCS M8 X 1.25 X 20 BLK (x4) |

Required tools:

1. 13mm wrench
2. 5mm hex head



A. REMOVE OLD TRANSIT BRACKET

1. Use 13mm wrench and 5mm hex to remove items 1, 2, and 4. Discard hardware.
2. Remove item 3 and discard.
3. Repeat on other side of base.

B. ATTACH NEW TRANSIT BRACKET

1. Align new item 3 with holes A and B on Q300M Interface.
2. Install items 2 and 4 through holes on item 3 as shown.
3. Secure item 3 with items 1, 2, and 4 using 13mm wrench and 5mm hex tool. Torque to 13.56-14.91 Nm [120-132 in-lbs].
4. Repeat on other side of base.



DEALER/TECHNICIAN WARNING

Attention dealers and qualified technicians, do not operate or service this device without first reading the owner's manual. If you do not understand the instructions and warnings in the owner's manual please contact the Quickie Technical Service Department before operating and/or servicing the Quickie device. Failure to do so may result in damage and/or injury.

Find more information and important warnings in the wheelchair owner's manual or at: www.SunriseMedical.com.

Sunrise Medical 2842 N. Business Park Ave Fresno, CA 93727 USA In Canada: (800) 263-3390



**Customer Service: +1(800) 333-4000
or visit www.SunriseMedical.com**

© 2022 Sunrise Medical (US) LLC
06/2022 254869 Rev. A
Page 1 of 1