

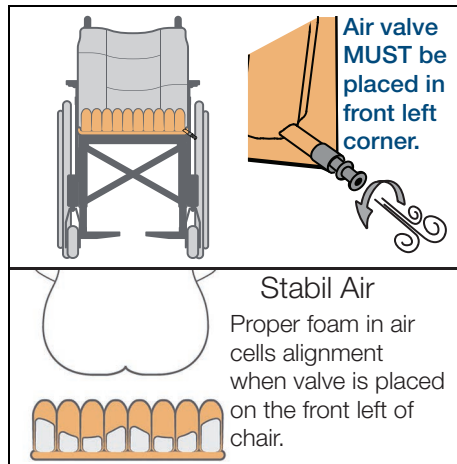
The **Stabil Air** cushion has two sizes of foam cylinders. The cylinders on the outside are higher, while those under the buttocks, coccyx and legs are lower, creating an anatomically shaped secondary layer of skin protection. This increases the stability and eases transfer to and from the cushion. The Stabil Air cushion has one chamber which is easy to use and provides stability.

The **Standard Air** cushion has pressure redistribution at its best with the enveloping qualities of the one compartment Standard Air cushion series. The flexibility of the Neoprene cells allows the cells to shape around the buttocks, keeping cell deformation to a very low level.

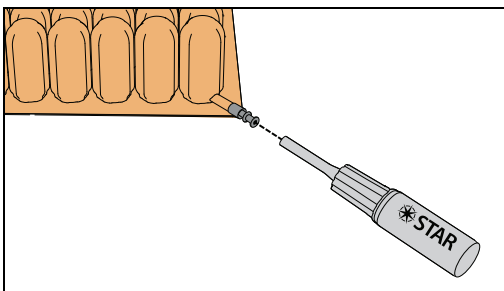
NOTE: Stabil Air and Standard Air are set up in the same manner. The foam in Stabil Air is only shown as a reference to what the foam looks like when in proper orientation.

General Setup

1. Ensure cushion is centered on the chair with air cells up. The air valve **MUST** be at the front left of the chair. For Stabil Air, the air valve being at the front left of the chair also ensures the foam inside the air cells is aligned properly. Turn the air valve counterclockwise to open.

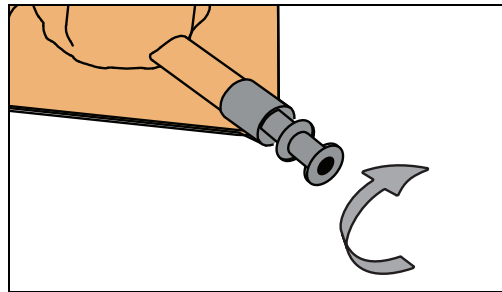


2. Slide the pump's nozzle over the valve and inflate the cushion until the cushion starts to arch upward.

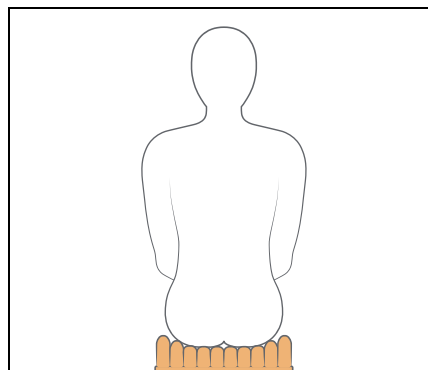


General Setup (Continued)

3. Pinch the pump nozzle and turn valve clockwise to close. Remove pump.

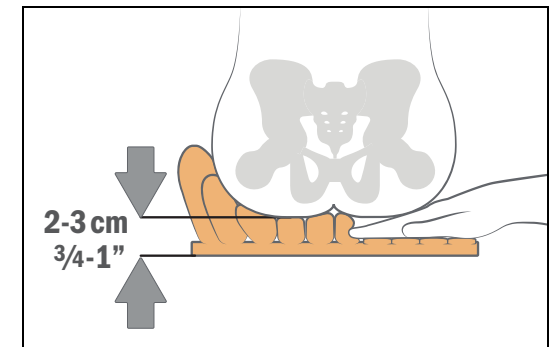


4. Have the user sit in the chair, in their normal seated position. Ensure the cushion remains centered on the chair.



Hand Check Adjustment

1. Slide your hand between the user's bottom and the cushion. Place your hand under the lowest bony prominence and turn the air valve counterclockwise to let air out. Release air until your hand becomes snug and there is a $\frac{3}{4}$ " - 1" (2 - 3cm) gap between the bottom of the cushion and the lowest bony prominence.



2. Turn air valve clockwise to close.



Please refer to the User Instruction Manual for other safety information regarding the Stabil Air and Standard Air Cushions.



For setup of the Star Sentinel with your Star cushion

Star Cushion Sizing Guide

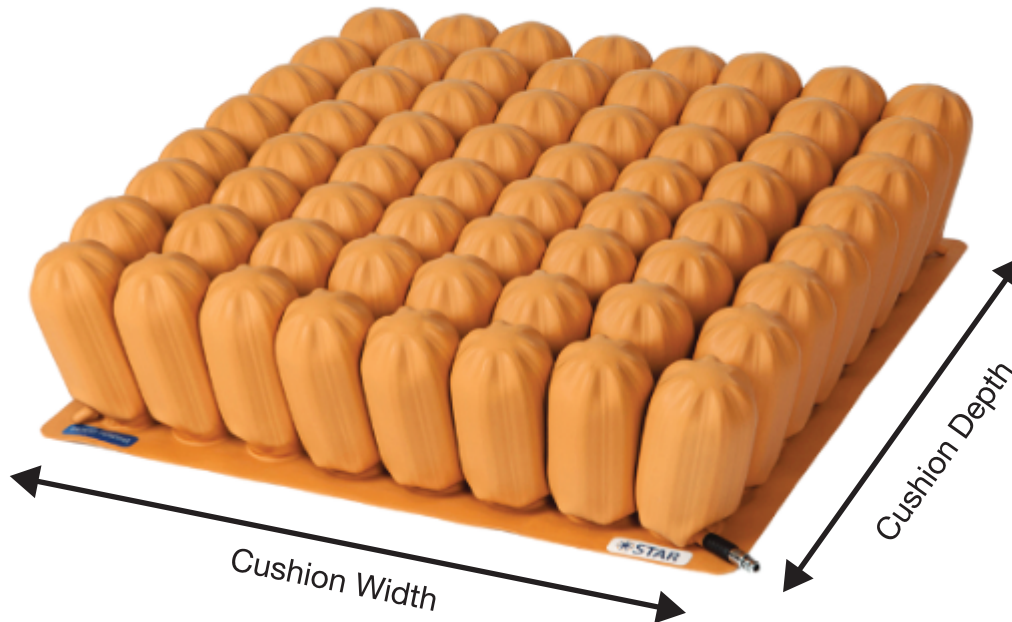
Fits Chair Width / Depth	*Cells	**Star Cushion Width / Depth
12" to 14" (30 - 35 cm)	7	13.5" (34 cm)
14" to 16" (35 - 40 cm)	8	15.5" (39 cm)
16" to 17" (40 - 44 cm)	9	17.25" (44 cm)
17" to 19" (44 - 49 cm)	10	19.25" (49 cm)
19" to 21" (49 - 54 cm)	11	21" (53 cm)
21" to 24" (54 - 61 cm)	12	22.75" (58 cm)

Proper Sizing of Your Star Cushion:

- Measure your wheelchair seat frame width and depth.
- Find your frame dimensions in the chart to determine the recommended number of cells and cushion width / depth.
- Cushion dimensions cannot change (air cells cannot be cut).

* Cushions are measured "flap to flap".

**Star cushion cell dimensions are different from ROHO



Cushion Flap to Flap Measurement												
	1	2	3	4	5	6	7	8	9	10	11	12
1												
2												
3												
4												
5												
6												
7												
8												
9												
10												
11												
12												
Cell Count												
Cushion Width												
Cushion Depth												