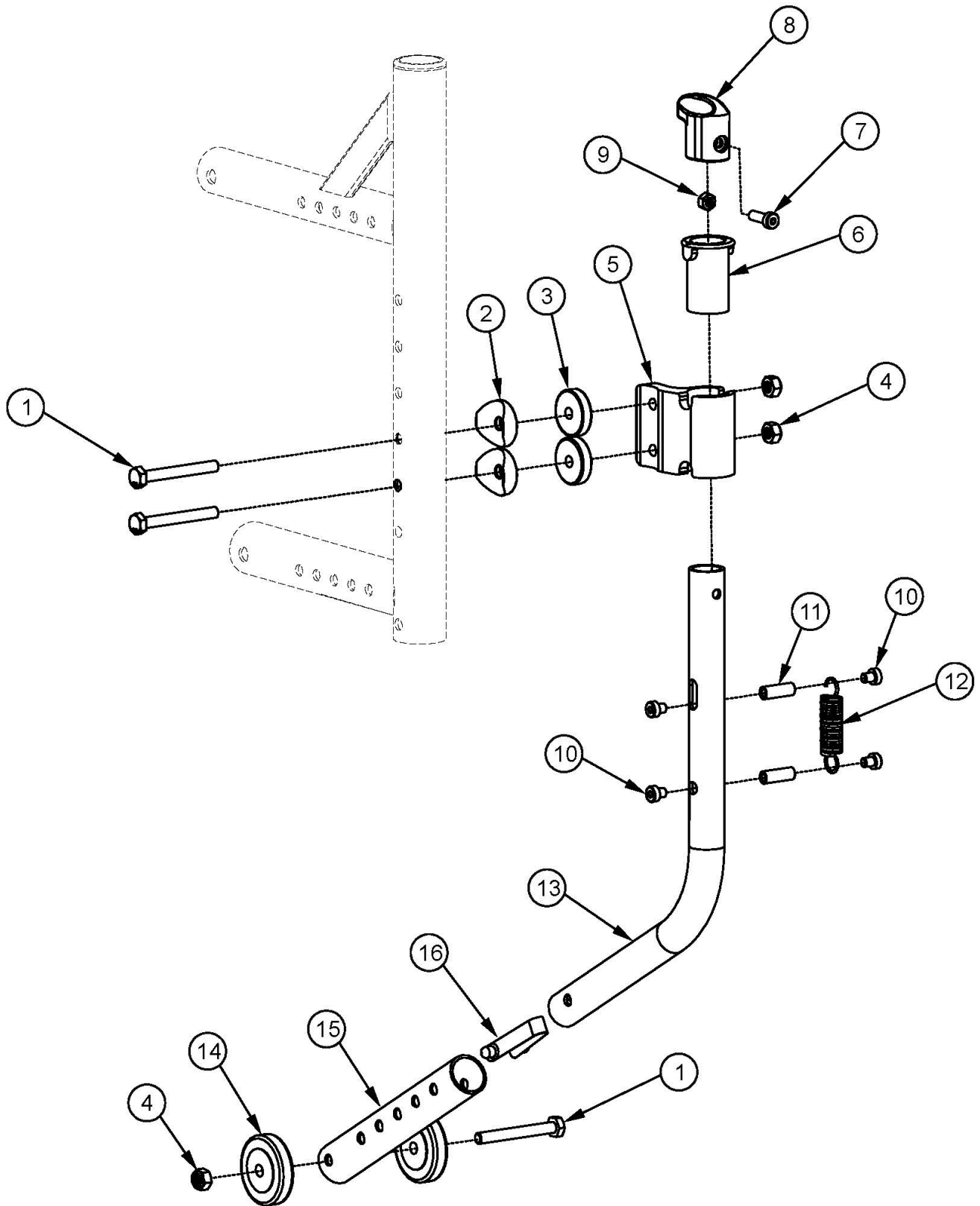


Catalyst 5VX Swing-In Anti-Tip



Item Number	Part Number	Description	Quantity	Retail
1-12, 13a, 14, 15a, 16	505428	Swing-In Anti-Tip Short Assembly, 5VX (PAIR) <i>Used is rear seat height is less than 16"</i>	1	\$309.00
1-12, 13c, 14, 15a, 16	505429	Swing-In Anti-Tip Long Assembly, 5VX (PAIR) <i>Used if rear seat height is 16" or greater</i>	1	\$309.00
1-12, 13b, 14, 15b, 16	505430	Swing-In Anti-Tip Steel, Short Assembly, Left 5VX <i>Used if rear seat height is less than 16" and a single Swing-In Anti-Tip is ordered</i>	1	\$154.50
1-12, 13b, 14, 15b, 16	109278	Swing-In Anti-Tip Steel, Short Assembly, Right 5VX <i>Used if rear seat height is less than 16" and a single Swing-In Anti-Tip is ordered</i>	1	\$154.50
1-12, 13d, 14, 15b, 16	505431	Swing-In Anti-Tip Steel, Long Assembly, Left 5VX <i>Used if rear seat height is 16" or greater and a single Swing-In Anti-Tip is ordered</i>	1	\$154.50
1-12, 13d, 14, 15b, 16	109279	Swing-In Anti-Tip Steel, Long Assembly, Right 5VX <i>Used if rear seat height is 16" or greater and a single Swing-In Anti-Tip is ordered</i>	1	\$154.50
1b, 4, 10-12, 13a, 14, 15a, 16	505432	Swing-In Anti-Tip Short Assembly Replacement, 5VX <i>Used if rear seat height is less than 16" and a pair of Swing-In Anti-Tips is present on chair</i>	1	\$70.04
1b, 4, 10-12, 13c, 14, 15a, 16	505433	Swing-In Anti-Tip Long Assembly Replacement, 5VX <i>Used if rear seat height is 16" or greater and a pair of Swing-In Anti-Tips is present on chair</i>	1	\$70.04
1b, 4, 10-12, 13b, 14, 15b, 16	505434	Swing-In Anti-Tip Steel Short Assembly Replacement, 5VX <i>Used if rear seat height is less than 16" and a single Swing-In Anti-Tip is present on chair</i>	1	\$70.04
1b, 4, 10-12, 13d, 14, 15b, 16	505435	Swing-In Anti-Tip Steel Long Assembly Replacement, 5VX <i>Used if rear seat height is 16" or greater and a single Swing-In Anti-Tip is present on chair</i>	1	\$70.04
5-9	506289	Catalyst Swing-In Anti-Tip Housing Assembly	1	\$29.15
1a	100674	M6 x 45 CLS10.9 DIN931 HHCS ZC	2	\$1.55
1b	101826	M6 x 50 HHCS Blk Zn <i>Used in place of 100674 when Swing Away Arms and Transit are both present on chair; Used to attach the Anti-Tip Tube Wheels</i>	2	\$2.06
2	000056	Saddle 1 1/8" <i>Used if Swing Away Arms or Transit is present on chair</i>	2	\$1.55
3	003516	1.0" OD x 0.25" Thick Spacer Washer <i>Used if Swing Away Arms and Transit are present on chair in addition to the 000056 saddles</i>	2	\$7.44

Item Number	Part Number	Description	Quantity	Retail
4	100658	M6 Nylock Nut Blk Zn	2	\$1.03
5	003510INST	Swing In Anti-Tip Housing with Instruction	1	\$21.94
6	003511INST	Swing In Anti-Tip Sleeve with Instruction	1	\$2.06
7	102801	M5 x 16, Low SHCS, Blk Zn	1	\$1.55
8	003515INST	Swing In Anti-Tip Knob with Instruction	1	\$3.09
9	100657	M5 Nylock Nut Blk Zn	1	\$0.52
10	102796	M5 x 6, Low SHCS, Blk Zn	4	\$4.12
11	003518	M5 x 19mm Threaded Barrel	2	\$5.15
12	003514INST	Spring. Ext, .50 OD x 2.0 LG x 050 W with Instruction	1	\$2.06
13a	003512	Swing In Anti-Tip Tube Short <i>Used if rear seat height is less than 16" and a pair of Swing-In Anti-Tips is ordered</i>	1	\$10.30
13b	003523	Swing In Anti-Tip Tube, Steel, Short <i>Used if rear seat height is less than 16" and a single Swing-In Anti-Tip is ordered</i>	1	\$10.30
13c	003513	Swing In Anti-Tip Tube Long <i>Used if rear seat height is 16" or greater and a pair of Swing-In Anti-Tips is ordered</i>	1	\$10.30
13d	003524	Swing In Anti-Tip Tube, Steel, Long <i>Used if rear seat height is 16" or greater and a single Swing-In Anti-Tip is ordered</i>	1	\$10.30
14	100506	Anti-Tip Tube Wheel	2	\$3.83
15a	000076	Anti-Tip Extension Long, Anodized	1	\$13.64
15b	004109	Anti-Tip Extension Long, E-Coat	1	\$11.82
16	100534	Detent Button Lower	1	\$3.52