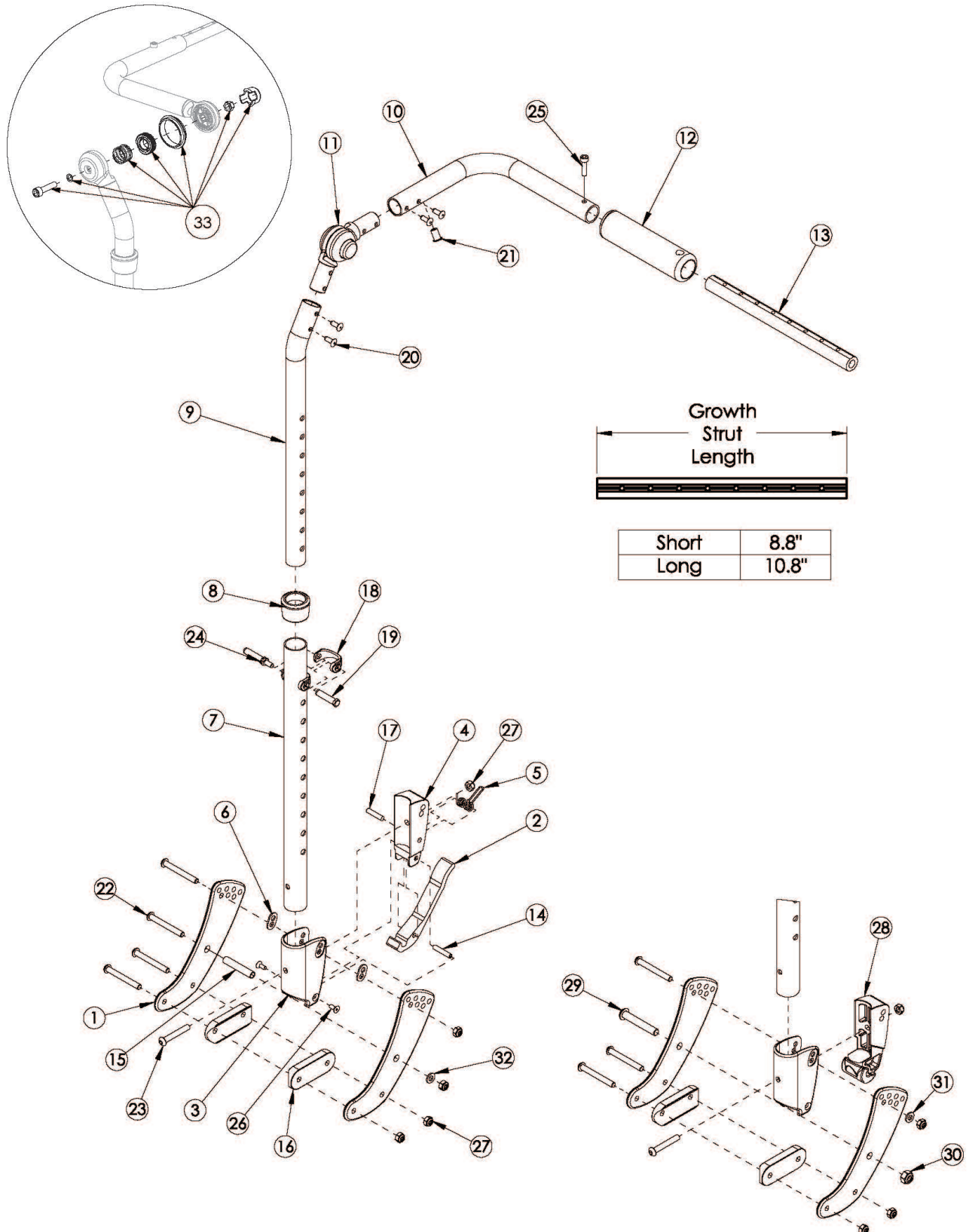


# Focus CR Height Adjustable with Adjustable Handle Backrest



*This Focus CR Height Adjustable Backrest is effective starting October 2015 with serial numbers prior to FCR0026599 and FCHD002333, unless a foot tilt or power tilt is present. If foot tilt or power tilt is present, this design effective starting with serial numbers FCR0033747 and FCHD002467. <p>*

*If changing from another style backrest and the hand tilt is present, a new Hand Tilt Cable/Trigger Kit may be required.<p>*

*If retrofitting from a foot tilt or power tilt to hand tilt and serial number is prior to FCR0033747 and FCHD002467, new back cane assemblies are required in addition to the hand tilt mechanism.*

<b>Item Number</b>	<b>Part Number</b>	<b>Description</b>	<b>Quantity</b>	<b>Retail</b>
2-6, 7a, 8, 14, 17-19, 23, 24, 26, 27	502663	Back Assm w/ Latch Insert, Lower Tube, Height Adj, Short Focus/Flip	1	\$99.64
2-6, 7b, 8, 14, 17-19, 23, 24, 26, 27	502664	Back Assm w/ Latch Insert, Lower Tube, Height Adj, Tall Focus/Flip	1	\$100.72
3, 7a, 8, 18, 19, 24, 28	502673	Lower Tube w/ Latch Insert, Height Adj Back, Short, Non-Folding Focus/Flip	1	\$85.52
3, 7b, 8, 18, 19, 24, 28	502674	Lower Tube w/ Latch Insert, Height Adj Back, Tall, Non-Folding Focus/Flip	1	\$86.59
9, 10a, 11, 12, 20, 21	502665	Upper Back Tube Assembly Height Adj, Right Focus/Flip <i>Used if foot tilt or power tilt is present and serial number is prior to FCR0033747 and FCHD002467.</i>	1	\$254.29
9, 10b, 11, 12, 20, 21	506758	Upper Back Tube Assembly Height Adjustable, Right Focus <i>If changing to a new hand tilt mechanism and serial number is prior to FCR0026599 and FCHD002333, this kit is required in addition to the hand tilt mechanism. If replacing this side back tube assembly and foot tilt or power tilt is present and serial number is prior to FCR0033747 and FCHD002467, both left and right upper back tube assemblies will need to be replaced.</i>	1	\$246.88
9, 10a, 11, 12, 20, 21	502666	Upper Back Tube Assembly Height Adj, Left Focus/Flip <i>Used if foot tilt or power tilt is present and serial number is prior to FCR0033747 and FCHD002467.</i>	1	\$254.29
9, 10b, 11, 12, 20, 21	506759	Upper Back Tube Assembly Height Adjustable, Left Focus <i>If changing to a new hand tilt mechanism and serial number is prior to FCR0026599 and FCHD002333, this kit is required in addition to the hand tilt mechanism. If replacing this side back tube assembly and foot tilt or power tilt is present and serial number is prior to FCR0033747 and FCHD002467, both left and right upper back tube assemblies will need to be replaced.</i>	1	\$246.88
1a, 15, 16, 22, 27, 32	502675	Backrest Hardware Assembly, Single Side, Std Focus	1	\$183.86
1b, 15, 16, 22, 27, 32	502676	Backrest Hardware Assembly, Single Side, Transit Focus	1	\$220.81
1a, 16, 22, 27, 29-31	503102	Backrest Hardware Assembly, Single Side, Std Non-Folding Focus	1	\$184.57
1a, 1b, 16, 22, 27, 29-31	503103	Backrest Hardware Assembly, Single Side, Transit Non-Folding Focus	1	\$221.52
13a, 25	503107	Growth Strut Assembly Short, Focus/Flip <i>Used on chairs 14"-17" wide</i>	1	\$25.63
13b, 25	503108	Growth Strut Assembly Long, Flip/Focus <i>Used on chairs 18"-22" wide</i>	1	\$27.99

Item Number	Part Number	Description	Quantity	Retail
1a	001071	Back Plate Std TILT	2	\$83.11
1b	001421	Back Plate Transit Inner TILT	1	\$120.07
2	001893	Latch Lever, Backrest	1	\$13.08
3, 6	503834	Cover Plate, Latch Insert Kit	1	\$24.83
4	001895	Latch Insert, Folding Backrest	1	\$6.47
5	001896	Spring, Backrest Latch	1	\$0.52
6	001897	Washer, Dual, PSA	2	\$2.05
8	001083	Bushing Height Adjustable Back Tilt	1	\$6.84
13a	002578	Growth Strut, Stroller, 10-20 Widths	1	\$25.22
13b	002579	Growth Strut, Stroller, 18-24 Widths	1	\$27.59
14	002513	Threaded Barrel, 5mm OD x M4	1	\$1.90
15	002738	Spacer .313 OD x .243 ID x 1.68 long	1	\$3.84
16	002594	Saddle, Dual, 1" OD X 1.75 SP	2	\$3.00
17	102694	Dowel Pin, M5 X 24, Blk Zn	1	\$1.55
18	000988	Fastener Retainer	1	\$3.86
19	000987	Threaded Fastener	1	\$3.71
22	101781	M6 x 50mm Partial Thread BHCS Blk ZC	4	\$1.55
23	100797	M6 x 40 BHCS BLK ZC	1	\$1.03
24	200427	M5 x 10 CLS8.8 HHCS ZC w/Patch DIN933	1	\$0.52
25	101843	M5 x 20 SHCS Blk Zn	1	\$0.52
26	101818	M4 x 10 FHCS BLKZC w/Patch	2	\$1.03
27	100658	M6 Nylock Nut Blk Zn	5	\$1.03
28	002035	Insert, Backrest, Non-Folding	1	\$14.11
29	101815	M8 x 50 BHCS Blk Zn	1	\$3.61
30	100659	M8 Nylock Nut Blk Zn	1	\$1.03
31	100746	M6 Flat Washer Blk Zn	1	\$1.55
32	101861	Nylon Washer 5/16 x 1/2 x .03	1	\$0.52