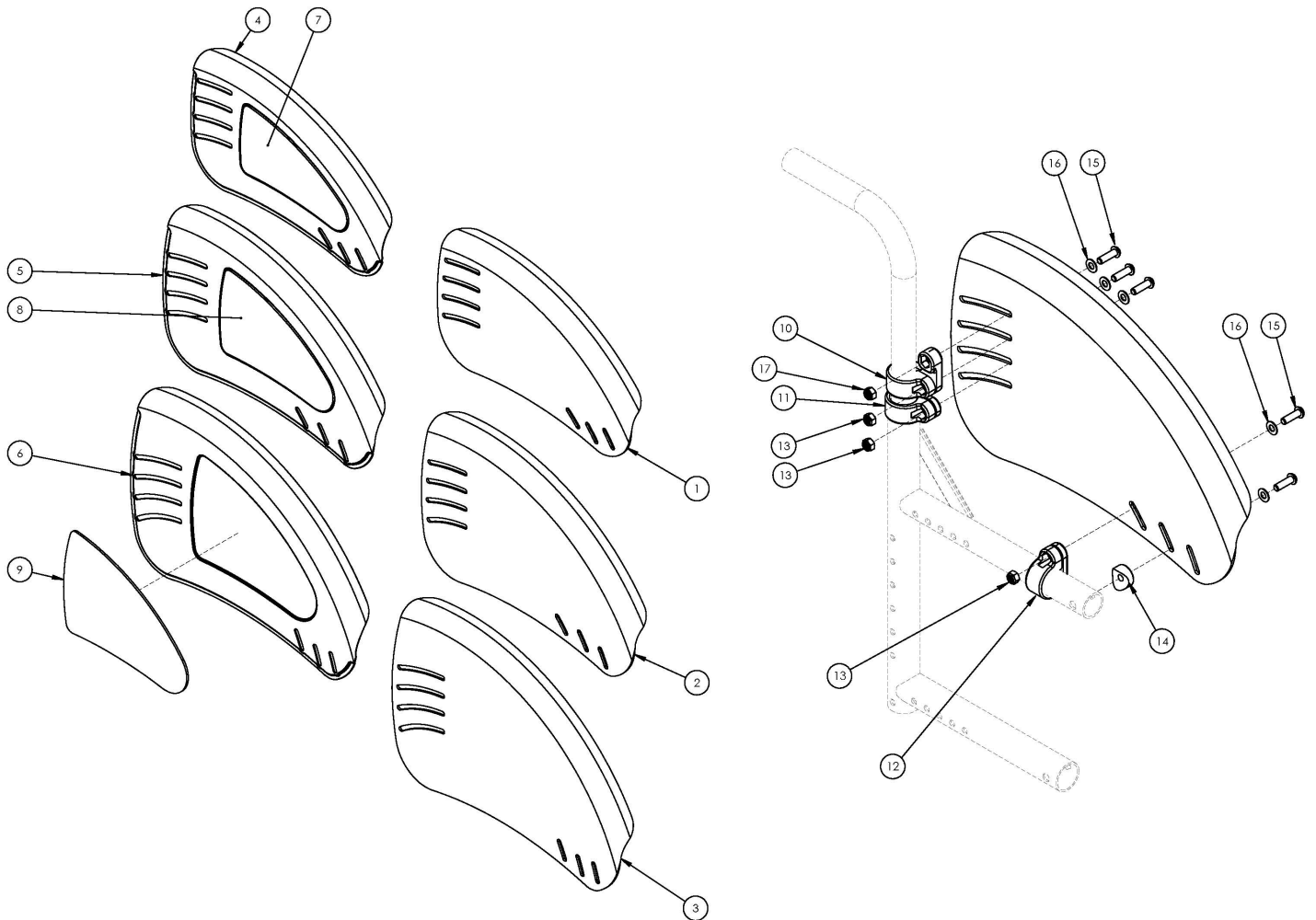


# Catalyst 5VX Fixed Mount Fender Side Guard



Some configurations may require the wheel locks to be reversed or use the extended wheel lock mount bar, part number 001321.

<p>

If the chair has a long rear frame and a serial number prior to C5053765 and C5HD003546, a new long rear frame is required.

Item Number	Part Number	Description	Quantity	Retail
10 - 17	506290	Fixed Mount Fender Side Guard Mounting Hardware Kit, Catalyst <i>Contains hardware for a pair of Fender Side Guards</i>	1	\$79.83
4a, 7a	506291	Fixed Mount Aluminum Fender Side Guard w/Foam Insert, Small, Right	1	\$75.19
4b, 7b	506292	Fixed Mount Aluminum Fender Side Guard w/Foam Insert, Small, Left	1	\$75.19
5a, 8a	506293	Fixed Mount Aluminum Fender Side Guard w/Foam Insert, Medium, Right	1	\$75.19
5b, 8b	506294	Fixed Mount Aluminum Fender Side Guard w/Foam Insert, Medium, Left	1	\$75.19
6a, 9a	506295	Fixed Mount Aluminum Fender Side Guard w/Foam Insert, Large, Right	1	\$75.19

Item Number	Part Number	Description	Quantity	Retail
6b, 9b	506296	Fixed Mount Aluminum Fender Side Guard w/Foam Insert, Large, Left	1	\$75.19
4a, 4b, 7a, 7b	506297	Fixed Mount Aluminum Fender Side Guard w/Foam Insert, Small, PAIR	1	\$150.38
5a, 5b, 8a, 8b	506298	Fixed Mount Aluminum Fender Side Guard w/Foam Insert, Medium, PAIR	1	\$150.38
6a, 6b, 9a, 9b	506299	Fixed Mount Aluminum Fender Side Guard w/Foam Insert, Large, PAIR	1	\$150.38
4a, 4b, 7a, 7b, 10-17	506300	Fixed Mount Aluminum Fender Side Guard Assembly, Small, PAIR, Catalyst	1	\$230.21
5a, 5b, 8a, 8b, 10-17	506301	Fixed Mount Aluminum Fender Side Guard Assembly, Medium, PAIR, Catalyst	1	\$230.21
6a, 6b, 9a, 9b, 10-17	506302	Fixed Mount Aluminum Fender Side Guard Assembly, Large, PAIR, Catalyst	1	\$230.21
1a, 1b	506303	Fixed Mount Carbon Fiber Fender Side Guard, Small, PAIR	1	\$515.00
2a, 2b	506304	Fixed Mount Carbon Fiber Fender Side Guard, Medium, PAIR	1	\$515.00
3a, 3b	506305	Fixed Mount Carbon Fiber Fender Side Guard, Large, PAIR	1	\$515.00
1a, 1b, 10-17	506306	Fixed Mount Carbon Fiber Fender Side Guard Assembly, Small, PAIR, Catalyst	1	\$594.83
2a, 2b, 10-17	506307	Fixed Mount Carbon Fiber Fender Side Guard Assembly, Medium, PAIR, Catalyst	1	\$594.83
3a, 3b, 10-17	506308	Fixed Mount Carbon Fiber Fender Side Guard Assembly, Large, PAIR, Catalyst	1	\$594.83
1a	003619	Fender, Carbon Fiber, Solid Mount, Small, Right	1	\$257.50
1b	003620	Fender, Carbon Fiber, Solid Mount, Small, Left	1	\$257.50
2a	003621	Fender, Carbon Fiber, Solid Mount, Medium, Right	1	\$257.50
2b	003622	Fender, Carbon Fiber, Solid Mount, Medium, Left	1	\$257.50
3a	003623	Fender, Carbon Fiber, Solid Mount, Large, Right	1	\$257.50
3b	003624	Fender, Carbon Fiber, Solid Mount, Large, Left	1	\$257.50
4a	003601	Fender, Aluminum, Solid Mount, Small, Right	1	\$66.95
4b	003602	Fender, Aluminum, Solid Mount, Small, Left	1	\$66.95
5a	003603	Fender, Aluminum, Solid Mount, Medium, Right	1	\$66.95
5b	003604	Fender, Aluminum, Solid Mount, Medium, Left	1	\$66.95
6a	003605	Fender, Aluminum, Solid Mount, Large, Right	1	\$66.95
6b	003606	Fender, Aluminum, Solid Mount, Large, Left	1	\$66.95
7a	003608	Fender Foam Insert, Small, Right	1	\$8.24
7b	003607	Fender Foam Insert, Small, Left	1	\$8.24

Item Number	Part Number	Description	Quantity	Retail
8a	003610	Fender Foam Insert, Medium, Right	1	\$8.24
8b	003609	Fender Foam Insert, Medium, Left	1	\$8.24
9a	003612	Fender Foam Insert, Large, Right	1	\$8.24
9b	003611	Fender Foam Insert, Large, Left	1	\$8.24
10a	003592	Fender Clamp, 0.875" ID, Right <i>Used with Standard Backrests; Mounted to back post</i>	1	\$9.01
10b	003591	Fender Clamp, 0.875" ID, Left <i>Used with Standard Backrests; Mounted to back post</i>	1	\$9.01
11	003594	Fender Clamp, 1.125" ID <i>Used with Angle Adjustable Backrest; Mounted to rear frame</i>	1	\$9.01
12	003593	Fender Clamp, 1.0" ID <i>Used when mounting to frame</i>	1	\$9.01
13	100658	M6 Nylock Nut Blk Zn	2	\$1.03
14	004436	Fender Side Guard Saddle <i>Used when mounting to frame</i>	1	\$5.15
15	102623	M6 x 20 BHCS BLK ZC	3	\$1.03
16	101853	M6 Washer Blk Zn	3	\$0.52
17	103960	M6 SS BLK Oxide Standard Nut	1	\$2.06